

# Introducing GET.transform

*GET.transform is a technical assistance programme supporting national and regional partners and institutions in advancing their energy transitions. The programme is supported by the European Union, Germany, Norway, Sweden, the Netherlands and Austria.*

## GET.transform in a Nutshell

European multi-donor programme

Beneficiaries: **public sector institutions**

Focus regions: **Africa, Latin America and the Caribbean**

## THE CHALLENGE

The world's pathway to net zero foresees the power sector delivering 60 percent of the required energy-related CO<sub>2</sub> emission reductions. To realise this goal while simultaneously closing the energy access gap, the world needs more **on-grid utility-scale** and **off-grid decentralised** renewable energy systems.

Though the need for **energy transitions through power sector transformation** is recognised by most public-sector actors, the institutional, regulatory, and technical environment to initiate change and trigger investment is often limited or yet to be built.

## THE APPROACH

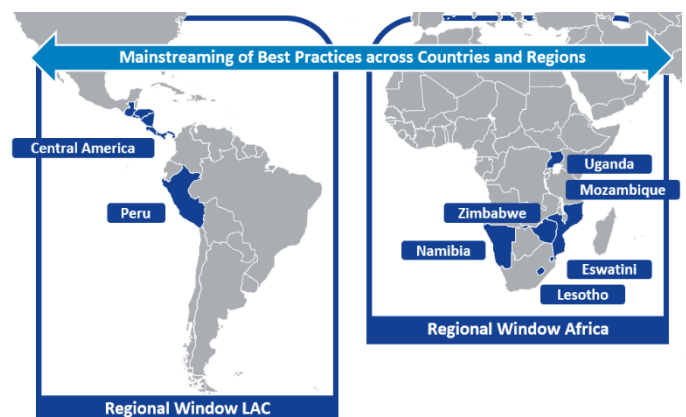
GET.transform focusses on supporting the **power sector as a key enabler** and on regulation as a pre-requisite to conducive conditions for large-scale clean energy deployment.

Operating globally with a focus on **Africa and Latin America and the Caribbean (LAC)**, the

GET.transform is supported by

programme uses a systematic approach in advancing power sector transformations with national or regional partners:

- Advisory services across **4 workstreams** that address the most relevant energy transformation challenges
- **Scaling-up** and mainstreaming of **country and regional experiences**
- **Cost-efficient implementation** following a standardised thematic and geographic approach



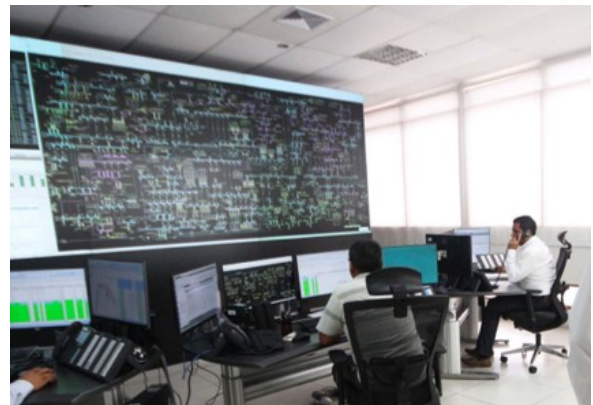
## FAST-TRACKING PROGRESS THROUGH TARGETED COLLABORATION

Flexibly deployed resources in combination with standing expertise in **long-term energy planning**, **on- and off-grid regulation and market development** as well as **renewable energy grid integration** enable GET.transform to support public-sector partners rapidly and cost-efficiently. Next to the programme’s modular set-up, it is GET.transform’s **strong focus on collaboration** that helps to accelerate progressive change in the

power sectors of partner countries and regions. Tapping into a **wide network of bilateral and international initiatives and institutions**, GET.transform ensures that its support to energy ministries, regulatory bodies, power utilities and regional organisations is truly additional to existing efforts, and informed by **global best practice**.






© Andrew Estebo



© MEM

## PORTFOLIO AND RESULTS

In-Depth Country Support 		Regional Capacity Building 		Impact 
Spotlight	Successfully piloting a new variable renewable energy (vRE) forecasting framework with the power system operator (COES) in Peru.	contributing to key initiatives	<b>PRLN</b> with <b>14</b> electricity regulators <b>AfSEM / CMP</b> with <b>5</b> African Power Pools <b>FOREPLEN</b> with energy planners from <b>15</b> countries in LAC <b>POLICY CATALYST</b> with energy sector officials from <b>+8</b> countries in Africa	New policies and regulatory frameworks adopted in several countries.  Including predecessor programme, more than <b>+30 policies and frameworks</b> have been supported.
	working in partnership with Energy Ministries Electricity Regulators Utilities Power System Operators  in <b>11</b> countries		The <b>Peer Review and Learning Network (PRLN)</b> , a three-year exchange of best practices among African regulator CEOs, has promoted continental <b>harmonisation</b> efforts, <b>leadership</b> capacities and <b>accelerated</b> the <b>roll-out</b> of new electricity regulation.	An unlocked potential to build <b>3,500 mini-grids</b> and invest about <b>EUR 400 million</b> in Uganda and Mozambique.

## CONTACT

**Christopher Gross**  
 Team Leader  
 T +49 228 4460 4293  
 M +49 152 90005540  
[christopher.gross@get-transform.eu](mailto:christopher.gross@get-transform.eu)

GET.transform c/o Deutsche Gesellschaft für Internationale Zusammenarbeit (GIZ) GmbH  
 Friedrich-Ebert-Allee 32 + 36  
 53113 Bonn, Germany  
[www.get-transform.eu](http://www.get-transform.eu)